

Tricentis NeoLoad: Browser-based testing with RealBrowser

Modern web and cloud-native applications have become increasingly complex and dynamic, making script design and maintenance a cumbersome and time-consuming challenge for many performance teams using manual or script heavy testing frameworks. Further, traditional protocol-based testing – while an important and necessary part of performance testing – does not fully represent the actual end-user performance metrics as experienced through a browser. To address this need, NeoLoad now provides browser-based testing capabilities with our RealBrowser technology.

Powerful browser-based performance testing

NeoLoad 9 with RealBrowser adds browser-based testing capabilities alongside our innovative and simplified approach to protocol-based testing. This enables users of all types to quickly design and capture end-user metrics for complex web applications with minimal expertise, using the same simplified design and maintenance features and interface available in NeoLoad for protocol-based testing.

Record user paths based on end-user actions

RealBrowser enables you to create tests in minutes for complex, single-page web applications by recording a user path based on end-user browser actions like mouse clicks and keystrokes. Take transaction response time testing to the next level by assessing the time it takes to render and display scripts, HTML content, and on-screen images.

Holistic, scalable performance testing for any application

Unlike other solutions on the market, NeoLoad provides browser-based testing alongside protocol-based testing as part of a single, standardized solution. Now, users can leverage RealBrowser technology to simulate the end-user experience in the browser and while also utilizing protocol testing to capture the performance and scalability data on the server side. The result is a true end-to-end view of performance and scalability that enables the delivery of high performing applications at speed.

INTEGRATIONS



Design

Simplify design for complex web applications

Fast and easy creation of test cases for every user

For complex apps (WebSocket, AJAX, Angular JS)

No deep expert knowledge necessary for design

Simple record/play design capabilities

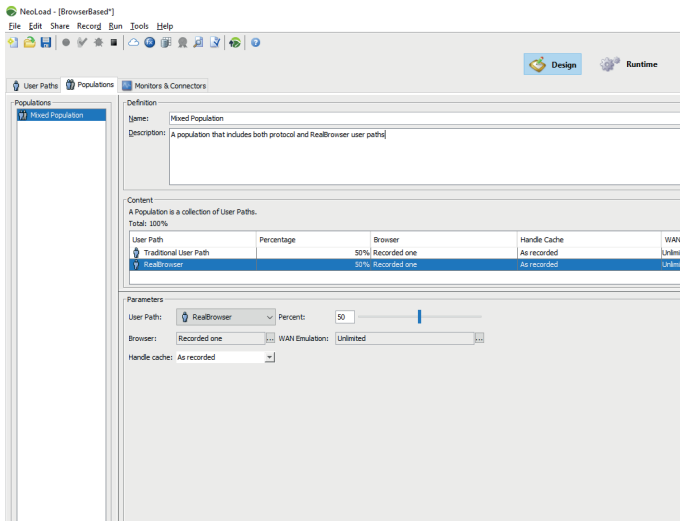
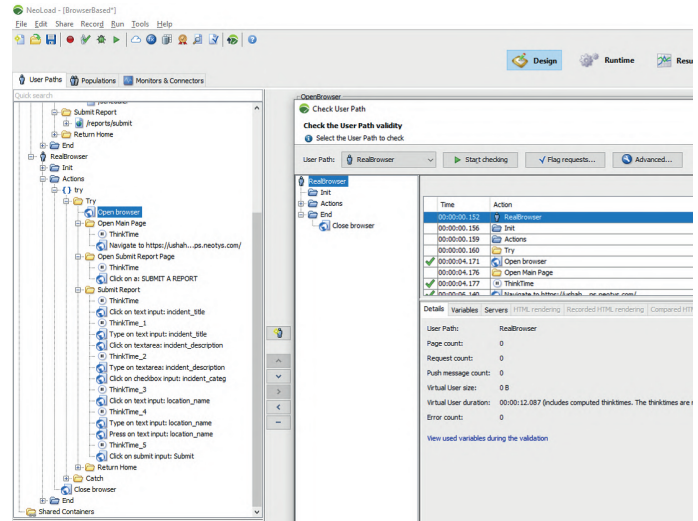
User paths that are extremely resilient to application volatility

Pre-built selectors for any application under test

Javascript/React frameworks

Packaged application support

Simplifies test creation based on selected environment, accelerating time to value



Execute

Execute from anywhere

- Deploy on-prem or from the cloud
- Leverage NeoLoad's dynamic infrastructure features
- Multi-zone cloud test availability

Cost and efficient infrastructure by design

- Built on modern technology and frameworks
- Roughly 30% more CPU and resource efficient than legacy browser-based tools

Runtime – combining protocol and browser-based testing

- Test true end-user performance with RealBrowser
- Ensure scalability with protocol testing
- Test end-to-end at scale

Analyze

Differentiate end-user performance and transaction results

- Reproduce true end-user experience through browser engagement behavior
- Capture response times and bounce rates
- Provide meaningful results quickly for increased business value

Integrate with leading APM solutions

- Bi-directionally view results
- Tight integration between what is being monitored and individual VU interactions
- Leverage existing APM configurations for monitoring in performance testing

